

**eSOLUTIONS**

# ALL YOUR SHIPPING NEEDS JUST ONE CLICK AWAY



  
**SHIPPING THE FUTURE**

# ABOUT CMA CGM

CMA CGM, headed by Rodolphe Saadé, is a worldwide leading shipping and logistics group, offering turn key adapted solutions.

Employing over 110,000 staff members worldwide, the Group is present on all five continents through its 755 offices, in more than 160 countries, serving 420 ports with a fleet of 509 vessels.

Since its creation, CMA CGM's goal is to constantly reinvent shipping, by always looking for better solutions, while respecting the environment.





## OUR DIGITAL AMBITION

The CMA CGM Group has made eSolutions a key service for its customers. We draw the benefits of our teams and network to innovate constantly in an aim to improve quality and fulfill our customers' needs. Our services are created to maximize your productivity. The CMA CGM Group's objective is to help you save time and boost your performances by enjoying a new experience of modern shipping.

The CMA CGM Group has set the goal to use technology to transform and ease your customer journey by making it 100% digital, thanks to a wide offer of products, within a multi-channel context, that cover all aspects of the transport cycle:



### Product catalog

A wide range of tools has been designed to accompany you through the entire transport cycle of your shipment.



### Transport execution

The management of all steps of your shipment made is possible: you can submit bookings, shipping instructions & VGM.



### eDocumentation

All your export & import documents are accessible from your dashboard, 24/7. You can view and correct your draft BLs online and Seawaybills, print your original bills of lading and Seawaybills. You can also benefit from a fully digital bill of lading.



### Extended visibility

All your shipment information are accessible through a unique dashboard, a container tracking tool and a notification system. You can also download our mobile app to follow your shipment from anywhere.



### Finance module

All your invoices, including their status, can be viewed at a glance from one dashboard – payment can be made online (soon available worldwide).



## MAKING SHIPPING SIMPLE

- **Multi Carrier**

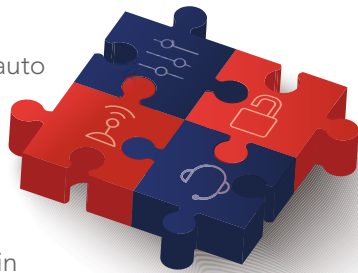
Enjoy the ease of a single-entry point for all the CMA CGM Group's platforms (CMA CGM, APL, ANL, and CNC), with a unique Login and Password.

- **Data Quality**

Use intuitive and interactive tools for auto data check, avoiding manual errors and improving quality.

- **Customer Care**

Benefit from our customer assistance in 5 languages and in 24/7 and get access to the entire CMA CGM network through one single portal without the burden to look for the right entry point.



- **Traceability**

Appreciate complete traceability allowed by electronic transactions and through alerts that you can setup to be received on a regular basis.

- **Self Service**

Access all your shipment data in one place, anytime, including reports that you can schedule to receive whenever you need them.

- **Customization**

Customize your shipment dashboard to only view the items you are interested in, your notifications to follow specific events, and the focus on the business handle by you and not your colleagues.

## OUR COMPLEMENTARY DIGITAL OFFER

In addition to our eBusiness platform and the wide range of products it provides, we offer alternative solutions to cover all your needs.

**EDI Direct** (Electronic Data Interchange) and **API** (Application Programming Interface) ensure direct and secure information flow between our customers & CMA CGM's information systems. Both boost the efficiency of all your transactions by allowing easy online exchange of documents and data between two companies.

The CMA CGM Group also offers a single digital access point to a wide range of **third party portals**.

Our team is available to discuss what solution is best for you.

# GET IN TOUCH

## With our 24/7 customer assistance

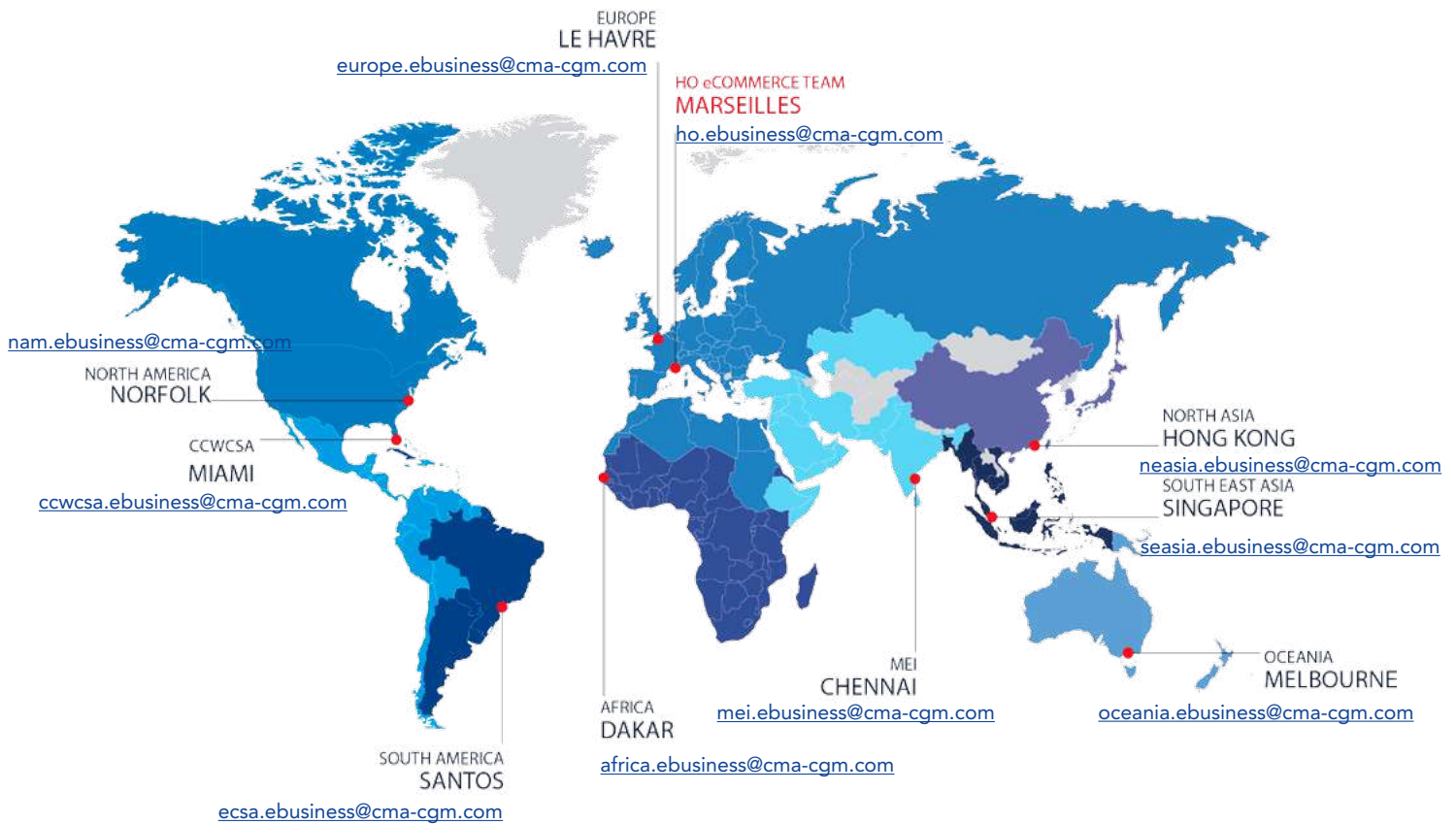
Benefit from our customer assistance 24/7, ready to provide solutions in less than 24 hours.

Get in touch with our team at: [ecustomersupport@cma-cgm.com](mailto:ecustomersupport@cma-cgm.com)



## With our global network

Our regional offices are here to help you to improve your eCommerce performance and to guide you through the best products to use, as well as strategic actions to take. Feel free to get in touch with the closest one to you.



Get started!



[cma-cgm.com](http://cma-cgm.com)



[anl.com.au](http://anl.com.au)



[apl.com](http://apl.com)



[cnc-ebusiness.com](http://cnc-ebusiness.com)

Also available on



Find CMA CGM GROUP on

